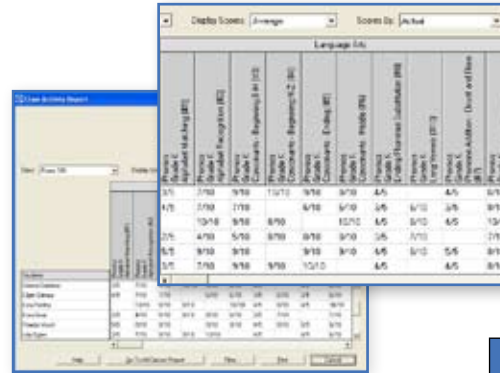
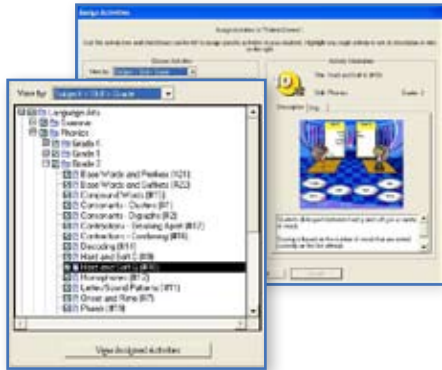


One Resource - Multiple Paths to Instruction, Differentiation and Total Student Improvement! ➔



Plan ➔

Review state specific standards to develop Language Arts and Math lessons plans around activities in Key Skills.

Instruct ➔

Key Skills concepts can be introduced through whole class instruction, delivered via the whiteboard and other technologies in the classroom. Support classroom activities using blackline masters included with each program.

Assign ➔

Assign activities for understanding and reinforcement of concepts. Activity length designed for completion during lab periods.

Assess ➔

Student progress measured through formative assessment and corresponding activities.

Review ➔

Reviews results by standard or activity to determine student understanding. Do they need individualized acceleration or remediation?

Differentiate ➔

Teacher can evaluate all students' progress and accelerate, remediate and differentiate in a whole class, small group, or individual basis. (Vital to tutoring programs, after school programs, and the home connection.)

Report ➔

Teachers can:

- Review formative assessment reporting with supervisors to illustrate completion of teaching to standard, assigning to standard, and acceleration or remediation (when necessary) to standard.
- Share reporting with parents parent teacher conferences – school to home connection.
- Connect instruction with tutors or reading coaches, special needs instructors to reinforce common objectives tied learning plans and improved results.



Language Arts

Project	3/5	7/10	7/10	6/10	6/10	6/10	3/5	7/10
Phonics - Alphabet Matching (#1)	3/5	7/10	7/10	6/10	6/10	6/10	3/5	7/10
Phonics - Alphabet Recognition (#2)	3/5	7/10	7/10	6/10	6/10	6/10	3/5	7/10
Phonics - Beginning D-M (#3)	3/5	7/10	7/10	6/10	6/10	6/10	3/5	7/10
Phonics - Beginning N-Z (#4)	3/5	7/10	7/10	6/10	6/10	6/10	3/5	7/10
Phonics - Ending (#5)	3/5	7/10	7/10	6/10	6/10	6/10	3/5	7/10
Phonics - Middle (#6)	3/5	7/10	7/10	6/10	6/10	6/10	3/5	7/10
Phonics - Ending Phoneme Substitution (#8)	3/5	7/10	7/10	6/10	6/10	6/10	3/5	7/10
Phonics - Long Vowels (#10)	3/5	7/10	7/10	6/10	6/10	6/10	3/5	7/10

